



January 10, 2014

Mr. Rodney Blaco
District Administrator, CA-34
934 S. Regina St.
Visalia, CA 93292

RE: Boundary Map – Porterville LL 405-34-10

Dear Rodney:

This will acknowledge receipt of a Boundary Map, approved by you, for **Porterville LL**.

The map will be placed in the league's permanent file here at Regional Headquarters and may be considered approved by Little League providing the boundaries do not conflict with any prior approved boundaries of any other chartered Little League program. You should also retain a copy of the approved map for your files.

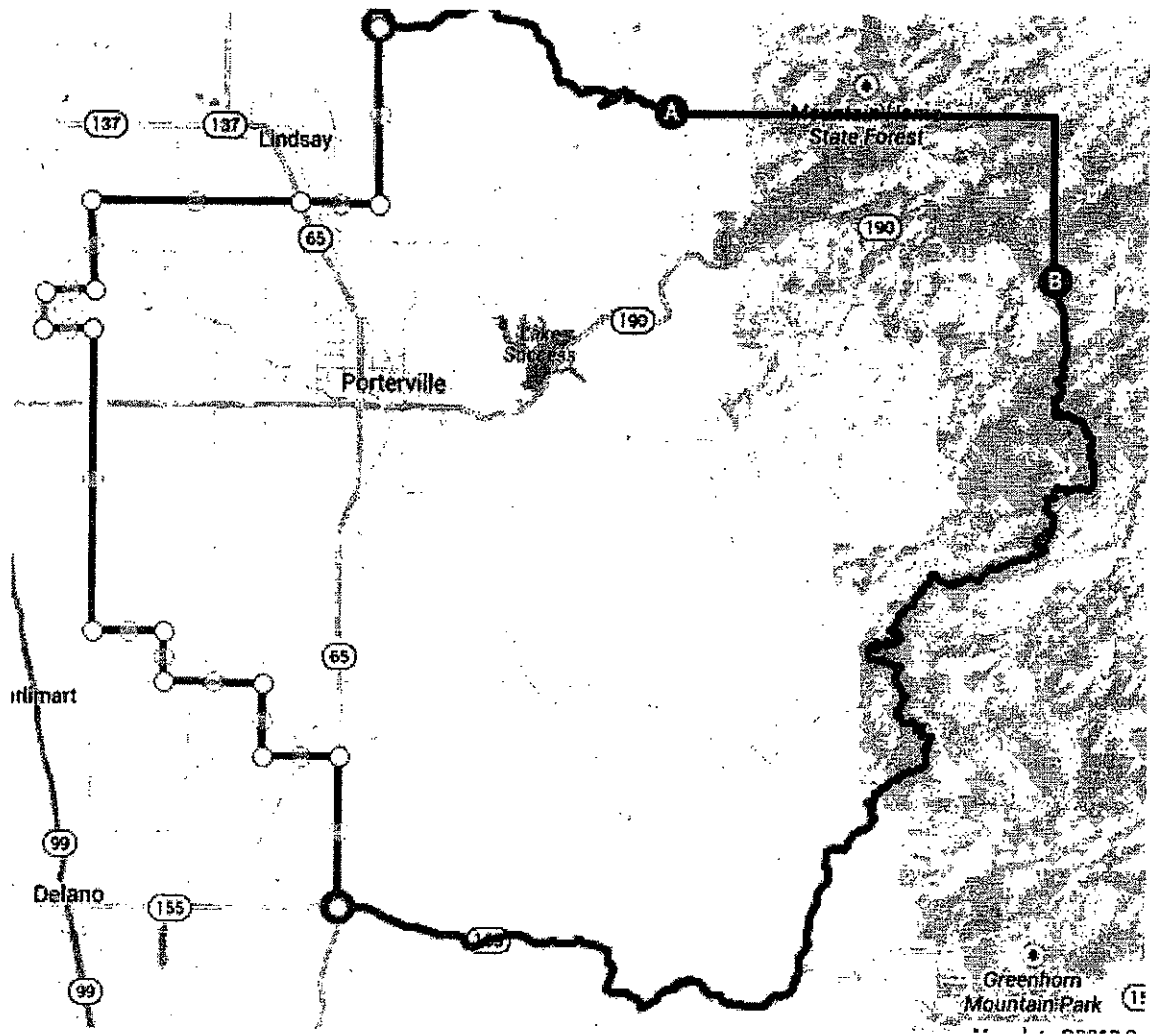
Each year, at registration, the league should display the approved map to insure that only those candidates who reside within the league's geographic boundaries are accepted into the league.

Please advise the league on this matter.

Best regards to the dedicated volunteers of your district for a safe and successful 2014 season.

Sincerely,

Brian Pickering
Western Region Assistant Director



PORTERVILLE
CA D34

Porterville 11-17-13
405-34-10
District Admin
M. P. P.

Porterville (405-34-10) BOUNDARIES NOVEMBER 2013

Northern Boundary.

West - Start at Intersection of Road 244 and Avenue 208. Head West on Avenue 208 until you hit Road 152.

East- Start at Intersection of Road 244 and Avenue 208. Head due North on Road 244 until it intersects Yokohl Valley Road. Then head East on Yokohl Valley Road to Balch Park Drive (J37) Head northeast on Balch Park Drive till it hits the National Forrest and meets the Due North Line from where 107 meets 190 (see Eastern Boundary)

Western Boundary. Head South on Road 152 from Intersection with Avenue 208, until you hit Avenue 180. Then west on Avenue 180 to Road 136. Then South on Road 136 until it hits Avenue 168. Then east on Avenue 168 until it strike Road 152. Then South on Road 152 until it strikes Avenue 72.

Southern Boundary. From Intersection of Road 152 and Avenue 72. Head East in Avenue 72 to Road 176. Then South on Road 176 to Avenue 56. Then East on Avenue 56 to Road 208 then south on 208. When 208 hits Avenue 32 head East to Highway 65. South on Highway 65 to Garces Highway (Route 155). Head East on 155 to Jack Ranch Road.

Eastern Boundary. From Intersection of 155 and Jack Ranch Road. Head North on Jack Ranch Road. Then follow Old Stage Road East. Then follow the Sequoia National Forrest Boundaries North until you reach Hot Springs Road (Road M-56/50)...follow M-50 through to Great Western divide Highway (107). When 107 meets Interstate 190 head due North.

Link: <https://mapsengine.google.com/map/edit?mid=zARK5BvtUeeE.kkEG4NdSuhMU>